



Government of India  
Ministry of Earth Sciences



India Meteorological Department

## PRESS RELEASE - 2

Time of issue: 1200 hours IST

Dated: 30-09-2021

**Sub: Depression over northeast Arabian Sea off Gujarat coast.**

Yesterday's well marked low pressure area (remnant of cyclonic storm GULAB) over south Gujarat region & adjoining Gulf of Khambhat moved west-northwestwards, emerged into Gulf of Kutch and concentrated into a Depression over northeast Arabian Sea & adjoining Kutch in the early morning (0530 hours IST) of today, the 30<sup>th</sup> September, 2021. Thereafter, it moved nearly westwards and lay centred at 0830 hrs IST of today, the 30<sup>th</sup> September, 2021, over northeast Arabian Sea off Gujarat coast, near latitude 22.7°N and longitude 68.6°E, about 60 km west-northwest of Devbhoomi Dwarka (Gujarat), 280 km east-southeast of Karachi (Pakistan) and 860 km east-southeast of Chabahar Port (Iran).

It is very likely to move west-northwestwards and intensify into a Deep Depression over northeast Arabian Sea off north Gujarat coast during next 12 hours. Then, it is very likely to move further west-northwestwards and intensify into a Cyclonic Storm during the subsequent 24 hours. Thereafter, it is likely to continue to move west-northwestwards towards Pakistan – Makran coasts, **moving away from the Indian coast. The system will not hit Indian coast.**

Forecast track and intensity are given in the following table:

Date/Time(IST)	Position (Lat. °N/ long. °E)	Maximum sustained surface wind speed (Kmph)	Category of cyclonic disturbance
30.09.21/0830	22.7/68.6	45-55 gusting to 65	Depression
30.09.21/1730	23.0/67.4	50-60 gusting to 70	Deep Depression
01.10.21/0530	23.3/66.2	60-70 gusting to 80	Cyclonic Storm
01.10.21/1730	23.7/64.7	80-90 gusting to 100	Cyclonic Storm
02.10.21/0530	24.2/63.2	90-100 gusting to 110	Severe Cyclonic Storm
02.10.21/1730	24.7/61.9	90-100 gusting to 110	Severe Cyclonic Storm

### Warnings:

#### (i) Rainfall

- 30<sup>th</sup> Sept.: Light to moderate rainfall at most places with heavy to very heavy falls at isolated places very likely over Saurashtra & Kutch.

#### (ii) Wind warning

- Squally wind speed reaching 45-55 kmph gusting to 65 kmph likely to prevail over northeast Arabian Sea and along & off south Gujarat coast and 40 – 50 kmph gusting to 60 kmph over east-central Arabian Sea along & off north Maharashtra coast till today evening.
- It would gradually increase thereafter, becoming squally wind speed reaching 50-60 kmph gusting to 70 kmph over northeast Arabian Sea and along & off Gujarat coast and 45 – 55 kmph gusting to 65 kmph over east-central Arabian Sea along & off north Maharashtra coast from the evening of today, the 30<sup>th</sup> September, till late night.
- It would further increase becoming Gale wind speed reaching 90-100 kmph gusting to 110 kmph over northeast & adjoining northwest Arabian Sea & along & off Pakistan – Makran coasts, 70-80 kmph gusting to 90 kmph along & off Gujarat coast and squally wind speed reaching 40 – 50 kmph gusting to 60 kmph over central Arabian Sea from the evening of 1<sup>st</sup> October and 90-100 kmph gusting to 110 kmph over north Arabian Sea and along & off Pakistan – Makran coasts, and 60-70 kmph gusting to 80 kmph along & off north Gujarat coast on 2<sup>nd</sup> October 2021.

Contact: Cyclone Warning Division, Office of the Director General of Meteorology,  
India Meteorological Department, Ministry of Earth Sciences.

Phone: (91) 11-24652484, FAX: (91) 11-24643128, 24623220, E-mail: [cwdhq2008@gmail.com](mailto:cwdhq2008@gmail.com), Website: [rsmcnewdelhi.imd.gov.in](http://rsmcnewdelhi.imd.gov.in)

Spatial rainfall distribution: Isolated: <25%, A few: 26-50%, Many: 51-75%, Most: 76-100%

Rainfall amount (mm): Heavy rain: 64.5 – 115.5, Very heavy rain: 115.6 – 204.4, Extremely heavy rain: 204.5 or more.

**(iii) Sea condition**

- Sea condition will be rough to very rough over northeast Arabian Sea and adjoining east-central Arabian Sea & along & off Gujarat – north Maharashtra coasts till today, the 30<sup>th</sup> Sept. 2021 evening.
- It will gradually increase thereafter, becoming 'High' over Northeast Arabian Sea and along & off Gujarat coast and adjoining eastcentral Arabian Sea and along and off Pakistan coast and rough to very rough along & off north Maharashtra coast on 1<sup>st</sup> October 2021.
- Sea condition will be 'High to very High' over north Arabian Sea and along and off north Pakistan – Makran coasts and 'High' over adjoining central Arabian Sea, very rough to High along & off north Gujarat coast on 2<sup>nd</sup> October.

**(iv) Fishermen Warning**

- Fishermen are advised not to venture into north & adjoining central Arabian Sea and along & off Gujarat & north Maharashtra coasts from 30<sup>th</sup> September till 2<sup>nd</sup> October 2021.

**(v) EXPECTED IMPACT & ACTION SUGGESTED**

- As the system is expected to move away from the Indian coast, apart from the impact associated with the very heavy rain events over Saurashtra & Kutch during next 24 hours, no further impact is likely over the Indian Mainland.
- However, Fishermen as well as Mariners are advised to avoid the Sea areas specified above.
- Also the On-shore & Off-shore installations located off Gujarat coast are advised to stall operations on 30<sup>th</sup> September & 1<sup>st</sup> October.
- Tourism & recreational activities along & off Gujarat coast also may be suspended on 30<sup>th</sup> Sept. & 1<sup>st</sup> October 2021.

The next bulletin will be issued at 1130 hrs IST of 30<sup>th</sup> September, 2021.

Kindly visit [www.rsmcnewdelhi.imd.gov.in](http://www.rsmcnewdelhi.imd.gov.in) and [www.mausam.imd.gov.in](http://www.mausam.imd.gov.in) for regular updates

---

Contact: Cyclone Warning Division, Office of the Director General of Meteorology,  
India Meteorological Department, Ministry of Earth Sciences.

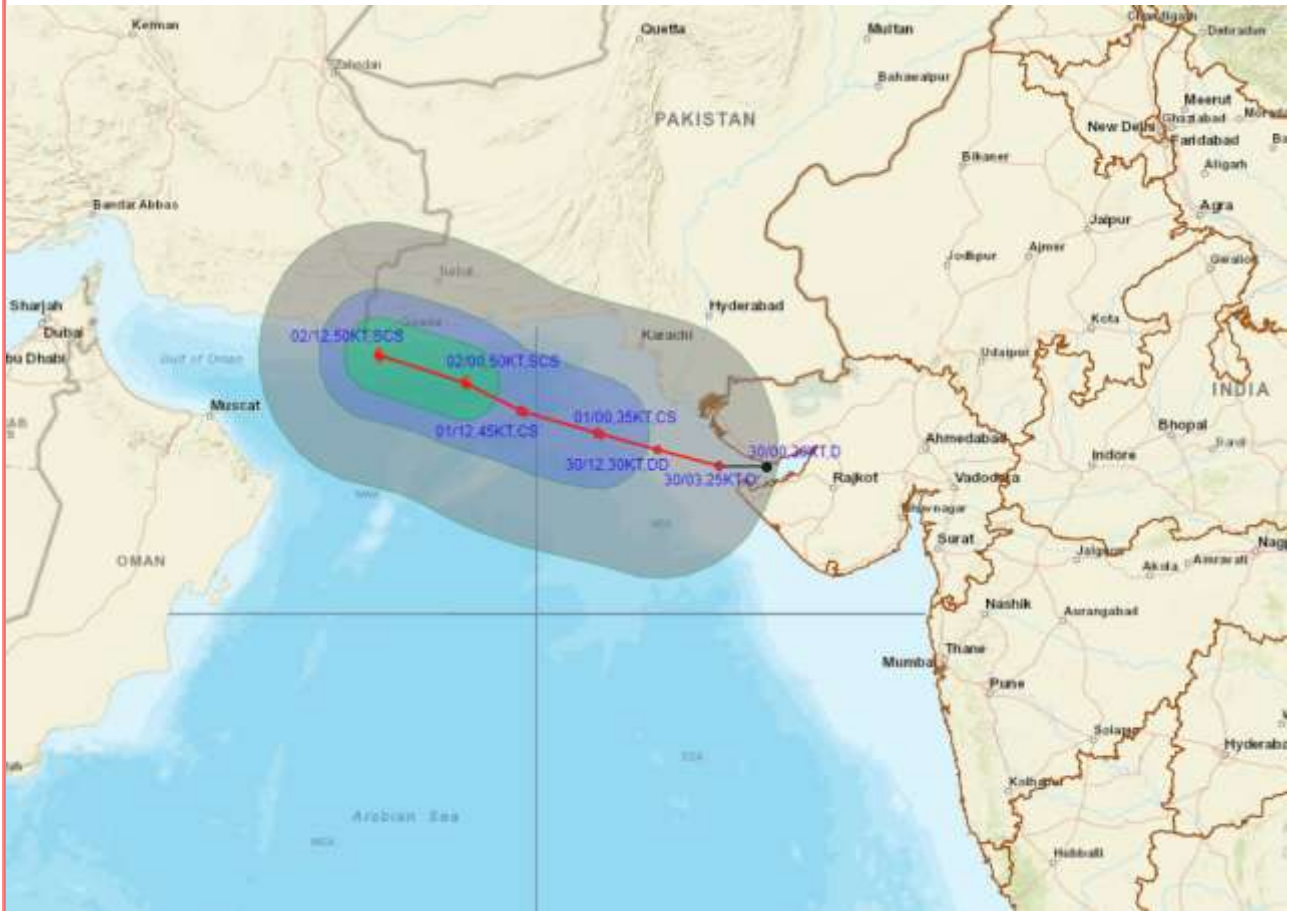
Phone: (91) 11-24652484, FAX: (91) 11-24643128, 24623220, E-mail: [cwdhq2008@gmail.com](mailto:cwdhq2008@gmail.com), Website: [rsmcnewdelhi.imd.gov.in](http://rsmcnewdelhi.imd.gov.in)

Spatial rainfall distribution: Isolated: <25%, A few: 26-50%, Many: 51-75%, Most: 76-100%

Rainfall amount (mm): Heavy rain: 64.5 – 115.5, Very heavy rain: 115.6 – 204.4, Extremely heavy rain: 204.5 or more.



**OBSERVED AND FORECAST TRACK ALONGWITH QUADRANT WIND DISTRIBUTION OF DEPRESSION OVER NORTHEAST ARABIAN SEA OFF GUJARAT COAST BASED ON 0300 UTC OF 30TH SEPTEMBER, 2021**



DATE/TIME IN UTC  
 IST=UTC + 0530  
 L: LOW PRESSURE AREA  
 WML: WELL MARKED LOW PRESSURE AREA  
 D: DEPRESSION (17-27 KT)  
 DD: DEEP DEPRESSION (28-33 KT)  
 CS: CYCLONIC STORM (34-47 KT)  
 SCS: SEVERE CYCLONIC STORM (48-63 KT)  
 VSCS: VERY SEVERE CYCLONIC STORM (64-89 KT)  
 ESCS: EXTREMELY SEVERE CYCLONIC STORM (90-119 KT)  
 SuCS: SUPER CYCLONIC STORM ( $\geq 120$  KT)

● LESS THAN 34 KT  
 ○ 34-47 KT  
 ●  $\geq 48$  KT  
 — OBSERVED TRACK  
 — FORECAST TRACK  
 — CONE OF UNCERTAINTY  
 AREA OF MAXIMUM SUSTAINED WIND SPEED:  
 ■ 28-33 KT (52-61 KMPH)  
 ■ 34-49 KT (62-91 KMPH)  
 ■ 50-63 KT (92-117 KMPH)  
 ■  $\geq 64$  KT ( $\geq 118$  KMPH)

**IMPACT OVER THE SEA**

MSW (knot/kmph)	Impact	Action
28-33 (52-61)	Very rough seas	Total suspension of fishing operations
34-49 (62-91)	High to very high seas	Total suspension of fishing operations
50-63 (92-117)	Very high seas	Total suspension of fishing operations
$\geq 64$ ( $\geq 118$ )	Phenomenal	Total suspension of fishing operations

Contact: Cyclone Warning Division, Office of the Director General of Meteorology, India Meteorological Department, Ministry of Earth Sciences.

Phone: (91) 11-24652484, FAX: (91) 11-24643128, 24623220, E-mail: cwdhq2008@gmail.com, Website: [rsmcnewdelhi.imd.gov.in](http://rsmcnewdelhi.imd.gov.in)

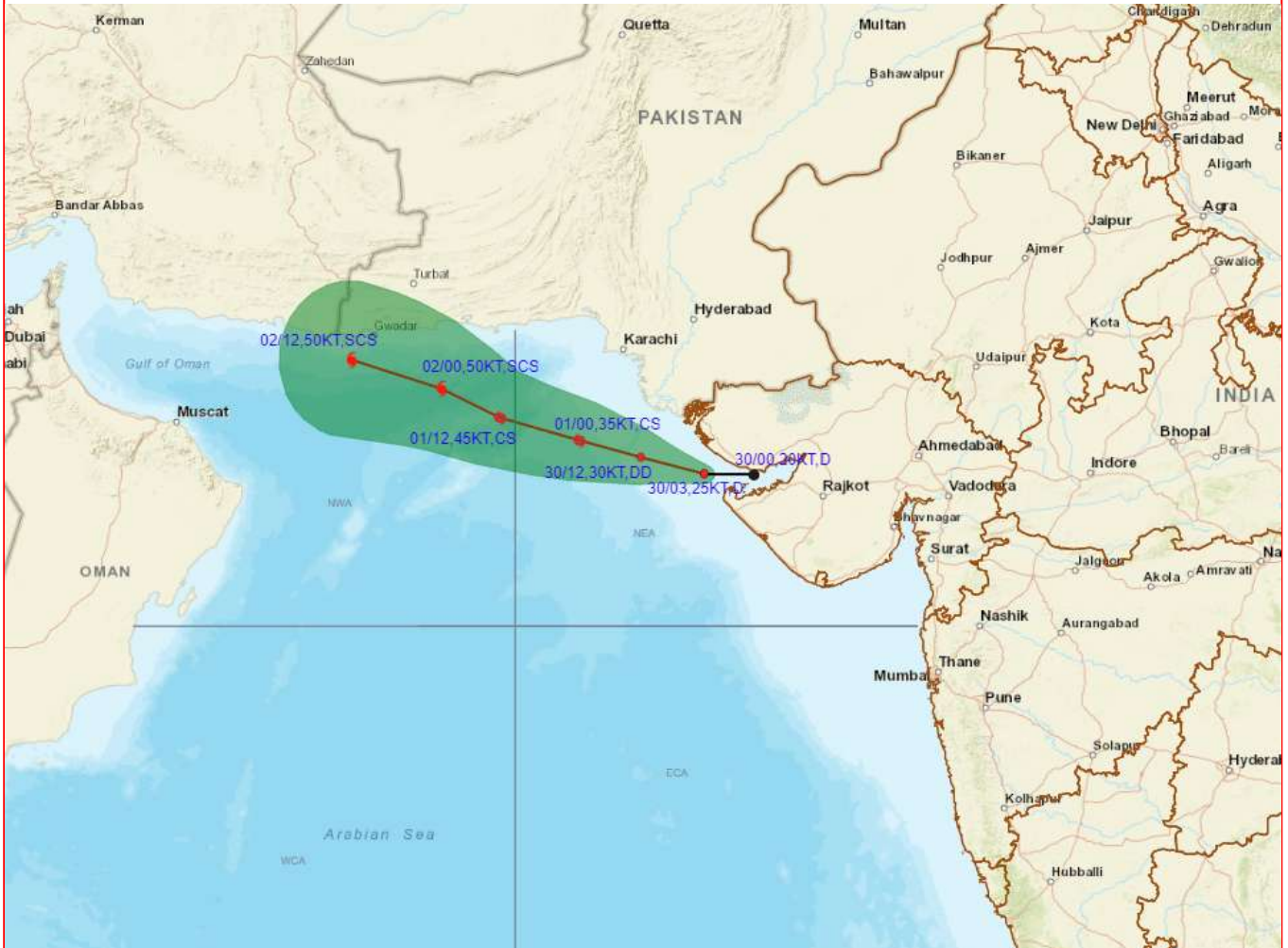
Spatial rainfall distribution: Isolated: <25%, A few: 26-50%, Many: 51-75%, Most: 76-100%

Rainfall amount (mm): Heavy rain: 64.5 – 115.5, Very heavy rain: 115.6 – 204.4, Extremely heavy rain: 204.5 or more.





**OBSERVED AND FORECAST TRACK ALONG WITH CONE OF UNCERTAINTY OF DEPRESSION OVER NORTHEAST ARABIAN SEA OFF GUJARAT COAST BASED ON 0300 UTC OF 30TH SEPTEMBER, 2021**



DATE/TIME IN UTC  
 IST=UTC + 0530  
 L: LOW PRESSURE AREA  
 WML: WELL MARKED LOW PRESSURE AREA  
 D: DEPRESSION (17-27 KT)  
 DD: DEEP DEPRESSION (28-33 KT)  
 CS: CYCLONIC STORM (34-47 KT)  
 SCS: SEVERE CYCLONIC STORM (48-63KT)  
 VSCS: VERY SEVERE CYCLONIC STORM (64-89 KT)  
 ESCS: EXTREMELY SEVERE CYCLONIC STORM (90-119 KT)  
 SuCS: SUPER CYCLONIC STORM ( $\geq 120$  KT)

● LESS THAN 34 KT  
 ⌀ 34-47 KT  
 ⌀ ≥ 48 KT  
 — OBSERVED TRACK  
 — FORECAST TRACK  
 ▲ CONE OF UNCERTAINTY

Contact: Cyclone Warning Division, Office of the Director General of Meteorology,  
 India Meteorological Department, Ministry of Earth Sciences.

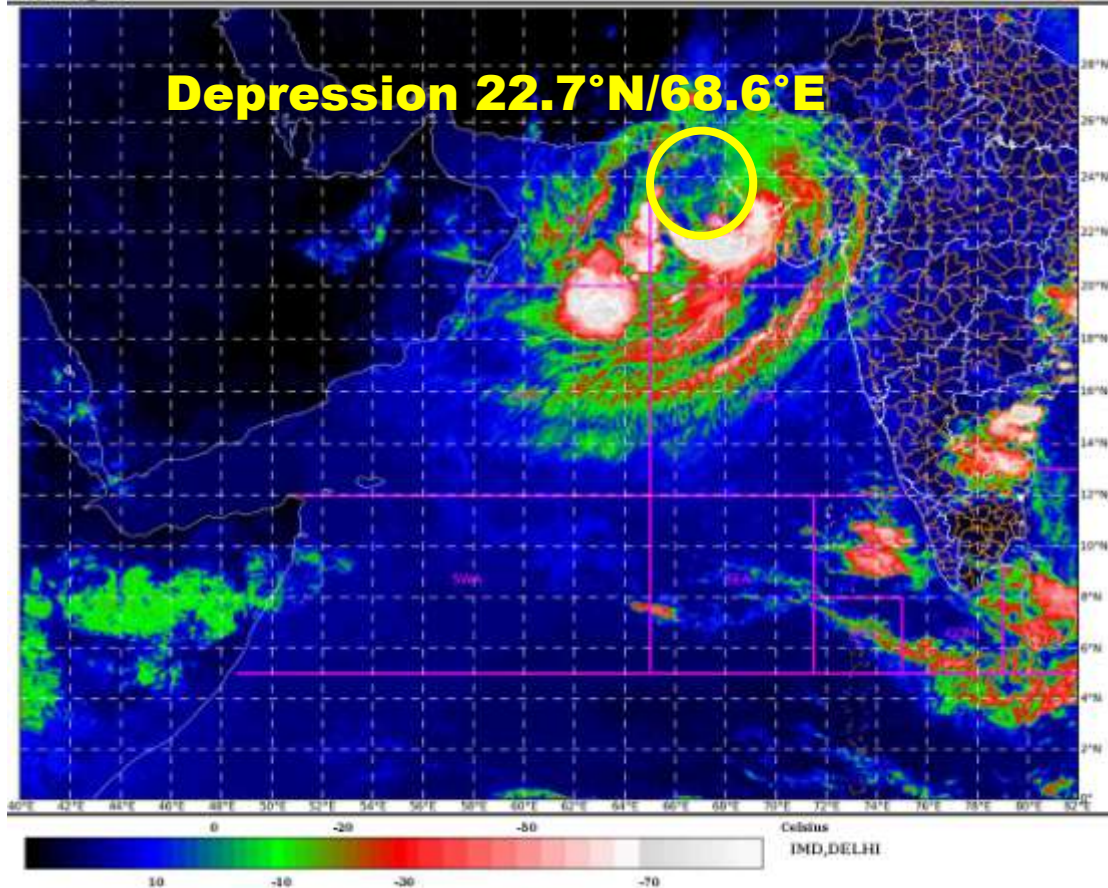
Phone: (91) 11-24652484, FAX: (91) 11-24643128, 24623220, E-mail: [cwdhq2008@gmail.com](mailto:cwdhq2008@gmail.com), Website: [rsmcnewdelhi.imd.gov.in](http://rsmcnewdelhi.imd.gov.in)

Spatial rainfall distribution: Isolated: <25%, A few: 26-50%, Many: 51-75%, Most: 76-100%

Rainfall amount (mm): Heavy rain: 64.5 – 115.5, Very heavy rain: 115.6 – 204.4, Extremely heavy rain: 204.5 or more.

SAT : INSAT-3D IMG  
IMG\_TIR1\_TEMP 10.8 um  
ARABIAN SEA

30-09-2021/(0530 to 0556) GMT  
30-09-2021/(1100 to 1126) IST



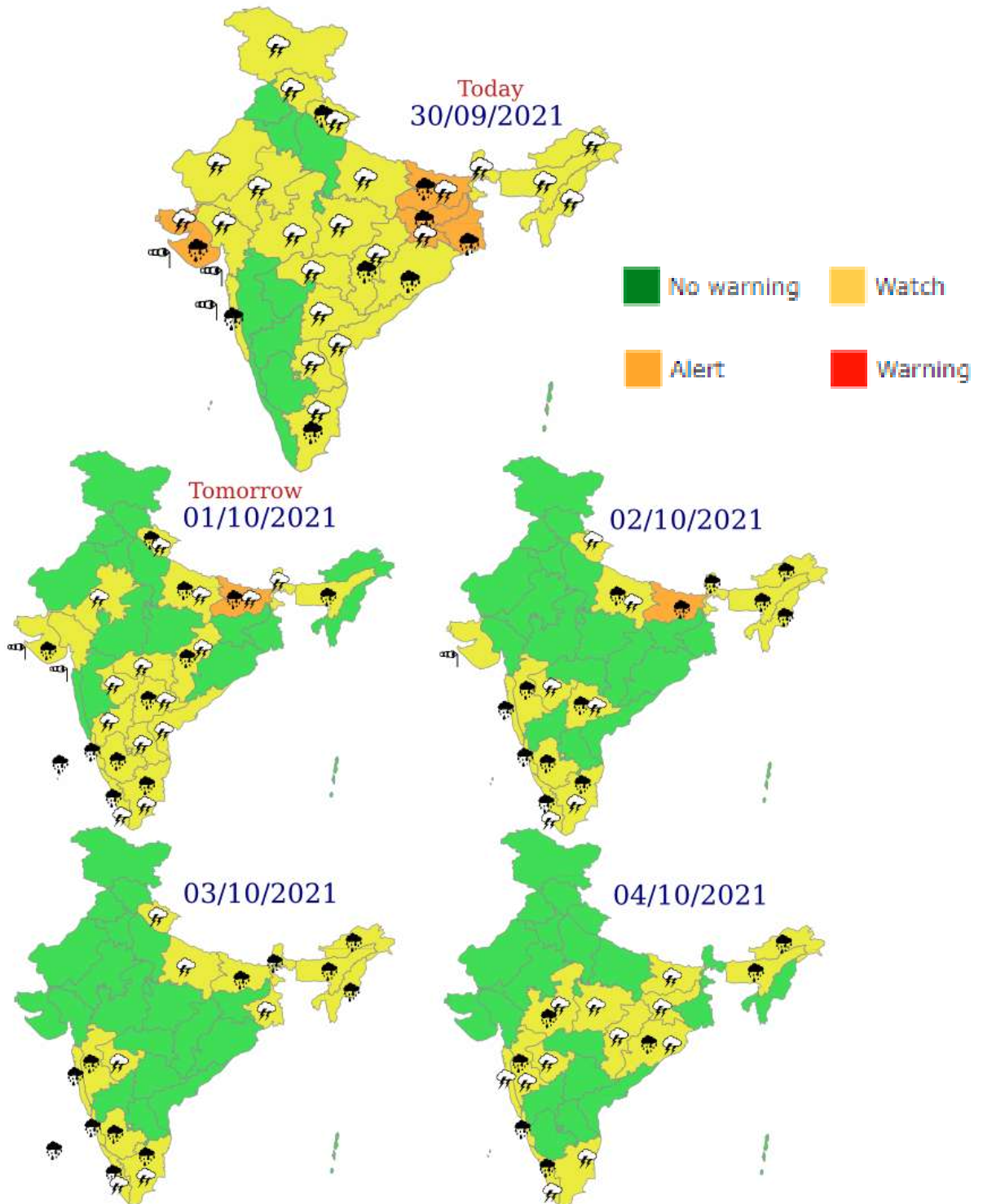
Contact: Cyclone Warning Division, Office of the Director General of Meteorology,  
India Meteorological Department, Ministry of Earth Sciences.

Phone: (91) 11-24652484, FAX: (91) 11-24643128, 24623220, E-mail: [cwdhq2008@gmail.com](mailto:cwdhq2008@gmail.com), Website: [rsmcnewdelhi.imd.gov.in](http://rsmcnewdelhi.imd.gov.in)

Spatial rainfall distribution: Isolated: <25%, A few: 26-50%, Many: 51-75%, Most: 76-100%

Rainfall amount (mm): Heavy rain: 64.5 – 115.5, Very heavy rain: 115.6 – 204.4, Extremely heavy rain: 204.5 or more.

## Meteorological Sub-division level heavy rainfall warning



Contact: Cyclone Warning Division, Office of the Director General of Meteorology,  
India Meteorological Department, Ministry of Earth Sciences.

Phone: (91) 11-24652484, FAX: (91) 11-24643128, 24623220, E-mail: [cwdhq2008@gmail.com](mailto:cwdhq2008@gmail.com), Website: [rsmcnewdelhi.imd.gov.in](http://rsmcnewdelhi.imd.gov.in)

Spatial rainfall distribution: Isolated: <25%, A few: 26-50%, Many: 51-75%, Most: 76-100%

Rainfall amount (mm): Heavy rain: 64.5 – 115.5, Very heavy rain: 115.6 – 204.4, Extremely heavy rain: 204.5 or more.